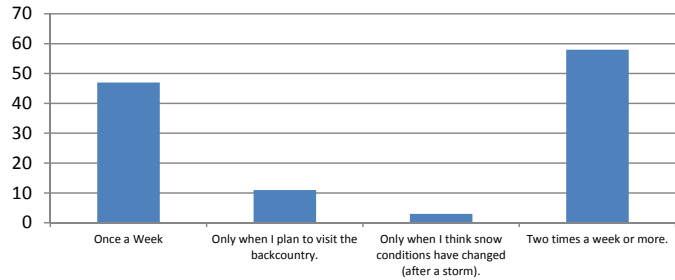
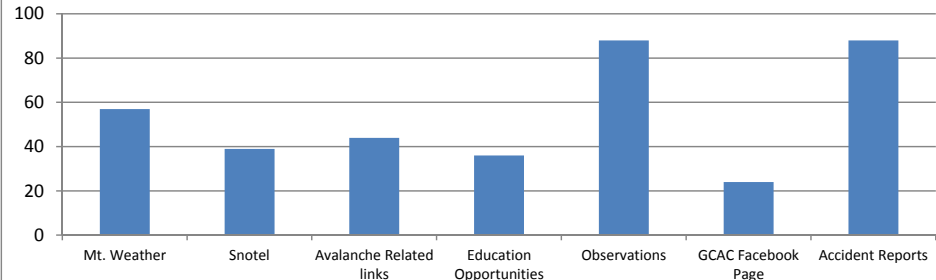


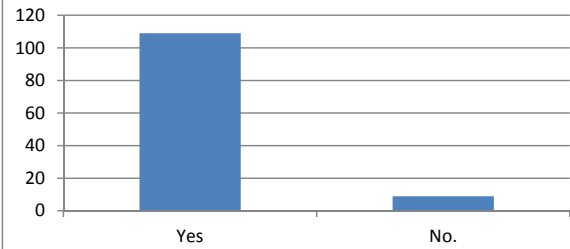
Website Visitation



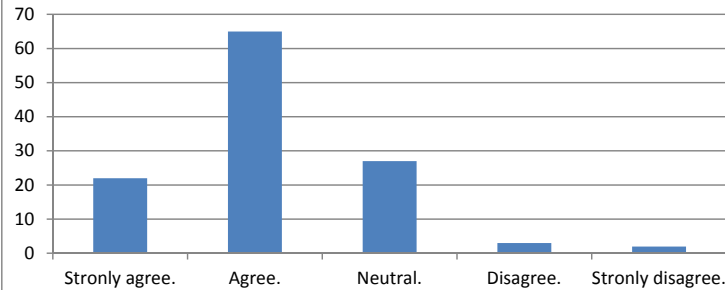
Use website to access other info



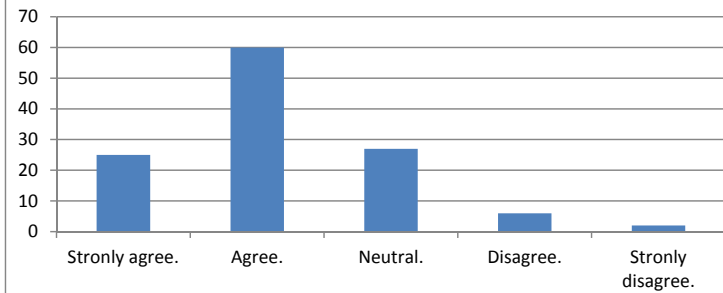
The structure and contents of the website are easy to understand?



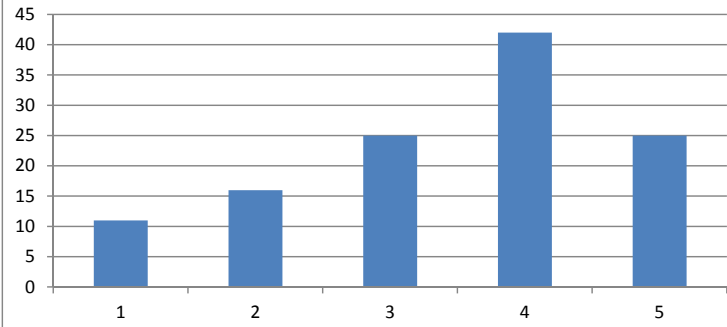
It is easy to find the information I need on the website?



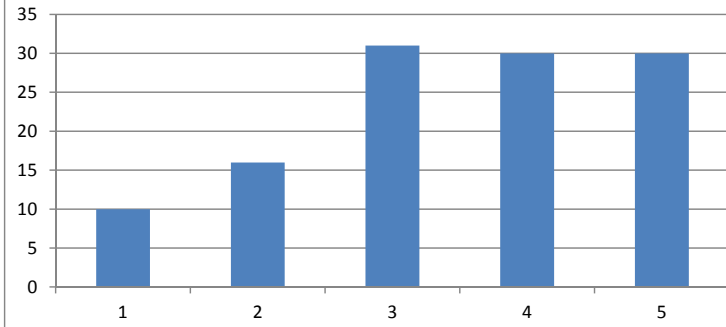
I have had a satisfactory experience using this website?



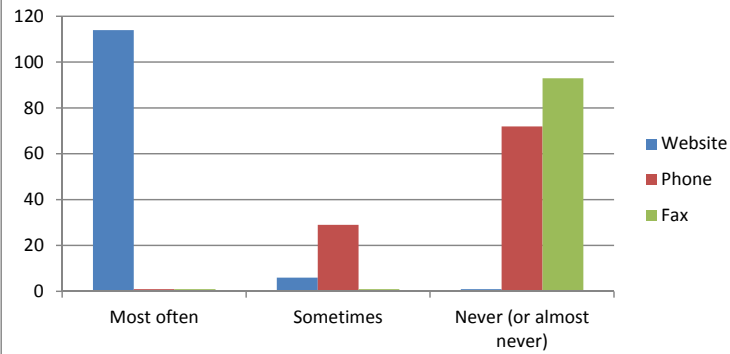
**How well does the advisory provide avalanche information?
Rate 1 to 5 with 5 being the best.**

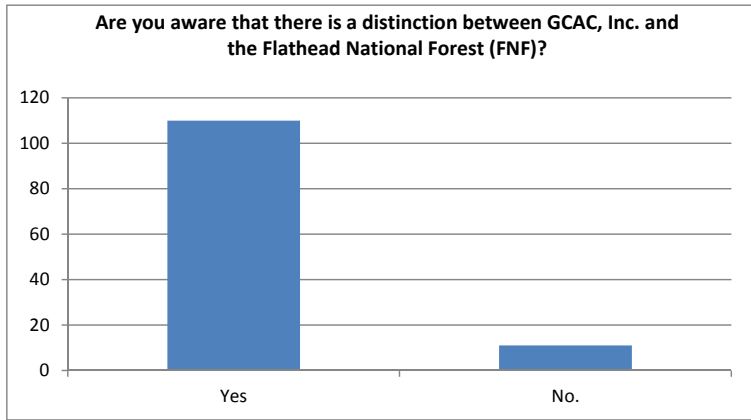
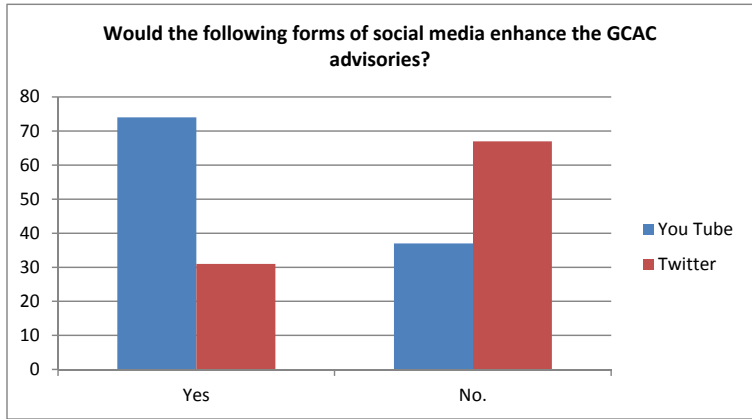
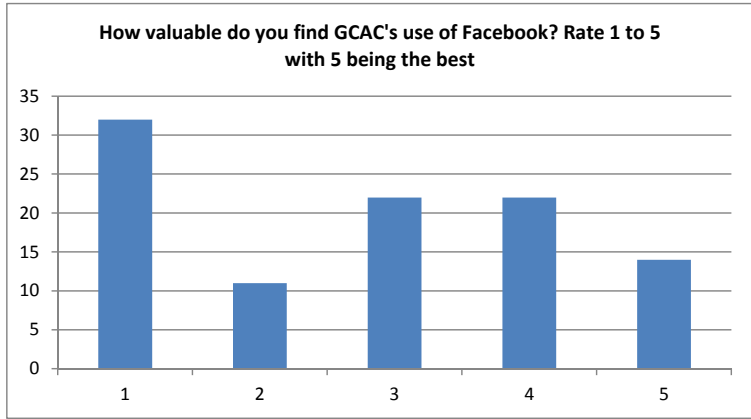


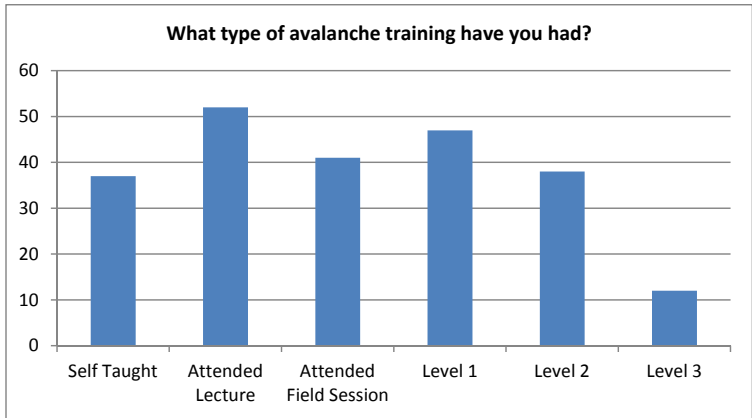
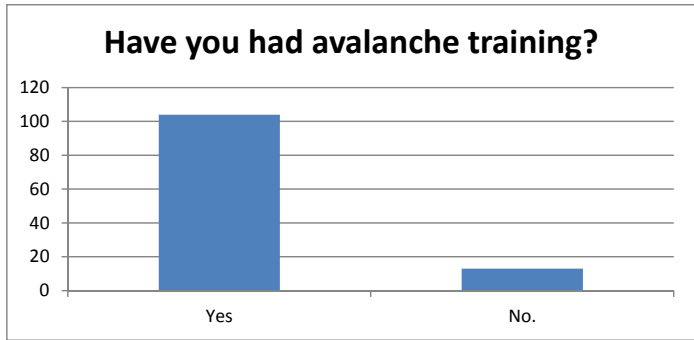
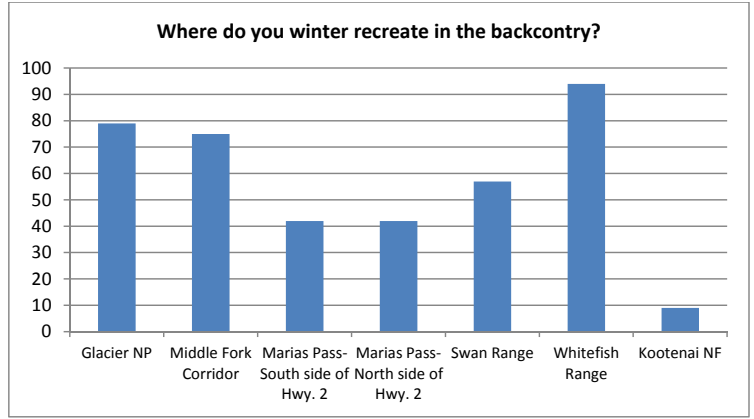
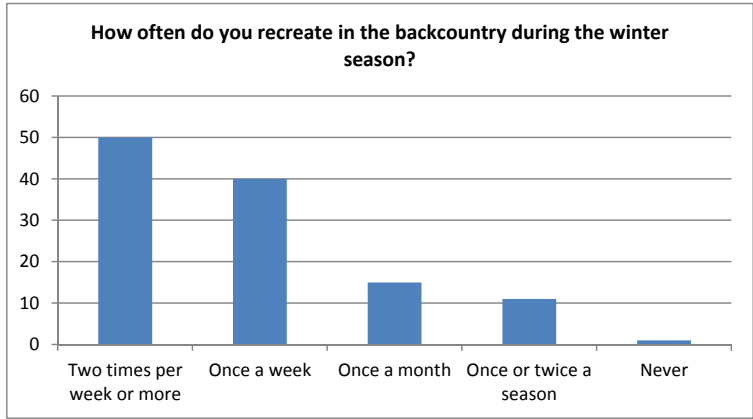
**How helpful do you find the avalanche advisory? Rate 1 to 5
with 5 being the best.**



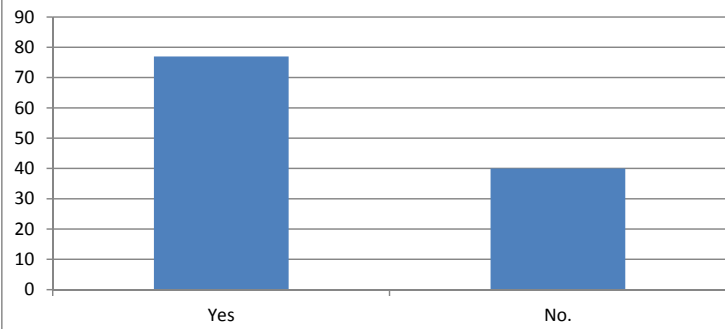
How do you prefer to access avalanche information?



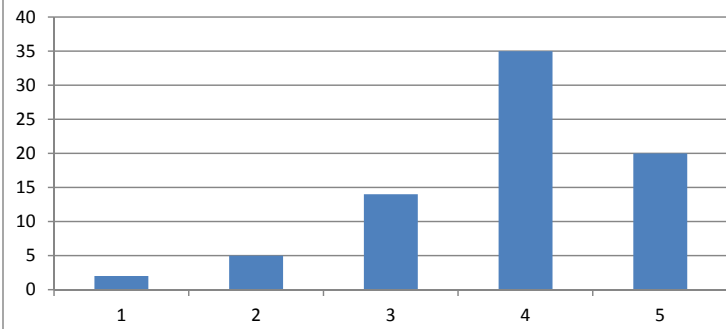




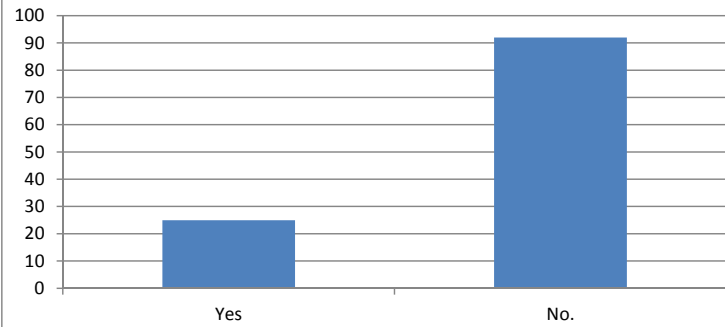
Have you ever attended the Avalanche Awareness Course taught by the Flathead National Forest avalanche specialist?



If yes, how would you rate this course? Rate 1 to 5 with 5 being the best. - Avy Awareness Course Rating



Have you attended one of the GCAC Town Hall series presentations at the Whitefish Library this season (2010-2011)?



If yes, please rate the value of this lecture. Rate from 1 to 5 with 5 being the best. - Town Hall Lecture

